

SANTA ROSALIA

Depths in feet

.10 n.m.

Mesa Francia
(Mesa Norte)

To San Ignacio
(45 mi.)



Smeater and Foundry Ruins

Cannery

Hotel Frances

Calle Frances

Marina office

Commercial Dock

Santa Marina

Dock

Panga Pier

Museo Historico Minero

Hospital

- A** - Autopartes y Ferreteria - hardware
- B** - Bank
- C** - Terco's Pollito - restaurant
- D** - ISSSTE
- E** - Panderia El Boleo
- F** - Chuyitas hot dogs
- G** - Fruteria la Sermana
- H** - La Michoacana - ice cream
- I** - Abarroses y Carniceria Delia
- J** - Telcel - Internet
- K** - Tortilleria
- L** - El Muelle - restaurant
- M** - La Huasteca - restaurant
- N** - Tacos el Poblano
- O** - Mini Super Moreno
- P** - Truper Ferreteria - hardware

Iglesia Santa Barbara
(Eiffel Church)

Calle Altamirano

Calle Playa

Parque Morelos

Biblioteca Mahatma Gandhi (Library)

Customs

Ferry Terminal

Fonatur office

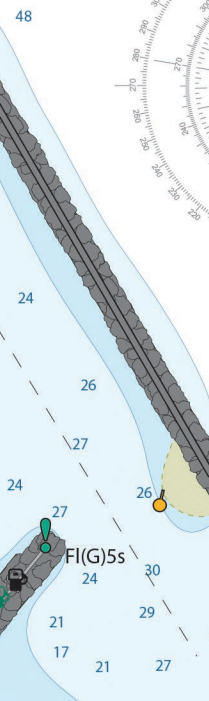
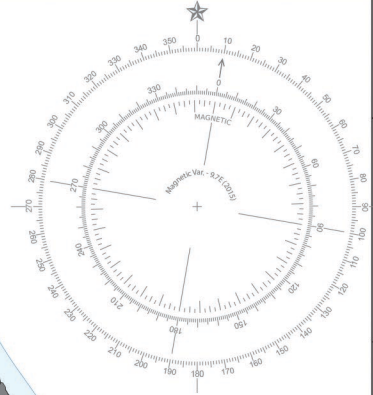
Port Captain

Pemex

Mesa Mexicana
(Mesa Sur)

Cemetery

To Mulege
(38 mi.)



F(R)5s

F(G)5s

From the cruising guide

SEA OF CORTEZ

www.bluelatitudepress.com